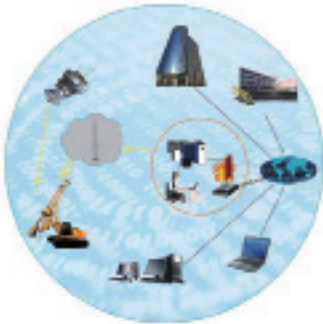


Rotary Drilling Rig
TR220D



Electric system

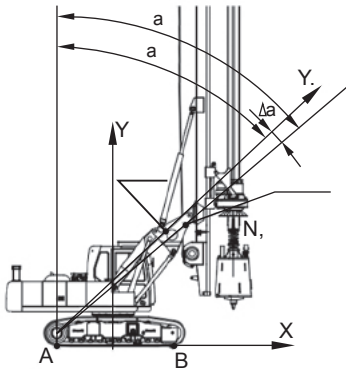
- Wireless transmission system and GPS remote service



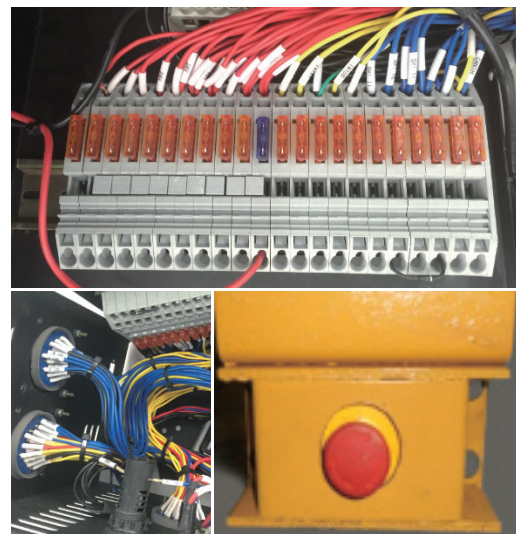
- Construction monitoring system



- The stability of drilling rig monitoring system

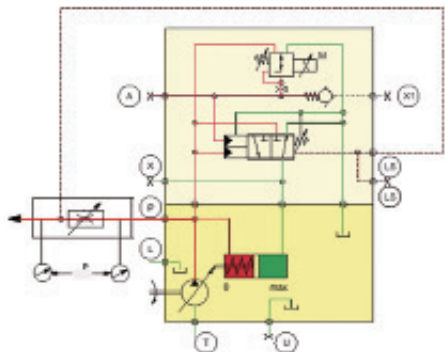


- Emergency switch(optional) and concentration of wiring harness

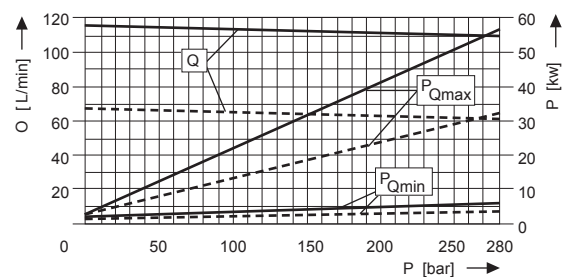


Hydraulic System

- Caterpillar's main hydraulic system
- The main pump negative flow control system
- The auxiliary pump load sensitive control system



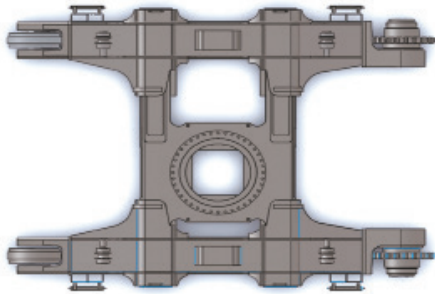
- One main hydraulic tank and two auxiliary hydraulic oil tank, the hydraulic oil cooling and cleaning easier



- The main winch hydraulic oil confluence technology improve the winch speed by 50%
- Crowd force stepless adjustment improve construction efficiency
- The rotary drive self-adaptive drilling system and high speed spin-off system improve drilling efficiency

Mechanical System

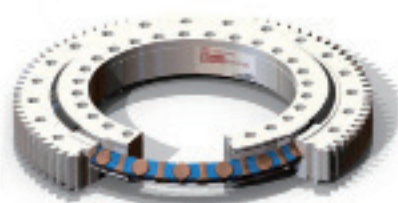
- Kelly drilling and CFA drilling
- Caterpillar Undercarriage



- Caterpillar Undercarriage structure and the mast structure, all materials are special high-strength steel



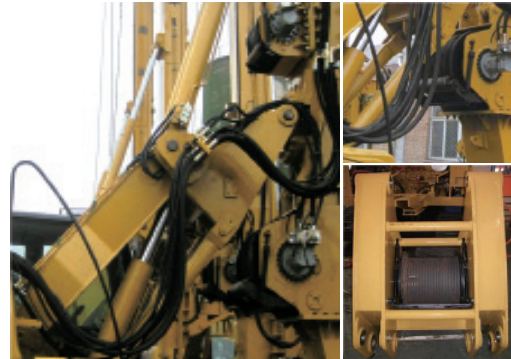
- Cross Roller Bearing improves the drilling accuracy significantly



- Reducer, motor, pump, valve configuration of the international first-class brand



- The broken line reel technology and the winch patent technology make the service life of wire rope improve greatly



- Rotary Drive multi-stage damping structure improves the borehole verticality and structural life



- Reasonable layout, repair, maintenance are convenient



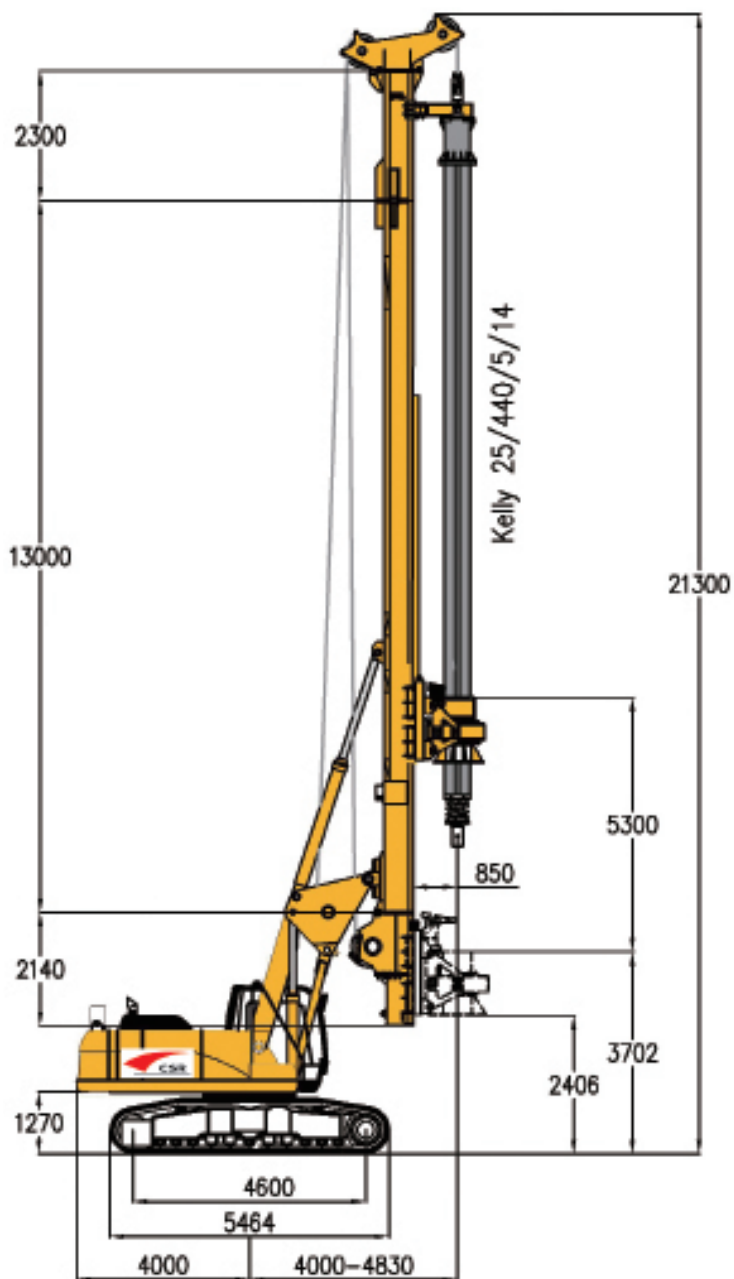
Dimensions



The TR220D rotary drilling rig has an operating weight of approx 67 ton. It is suited for:

- Rotary drilling
- Drilling cased boreholes
(installation of casing by rotary drive)

TR220D Rotary Drilling Rig is mainly used in the construction of civil and bridge engineering, which adopts advanced intelligent electronic control system and load sensing type pilot control hydraulic system, the whole machine is safe and reliable.



The whole machine standard equipment

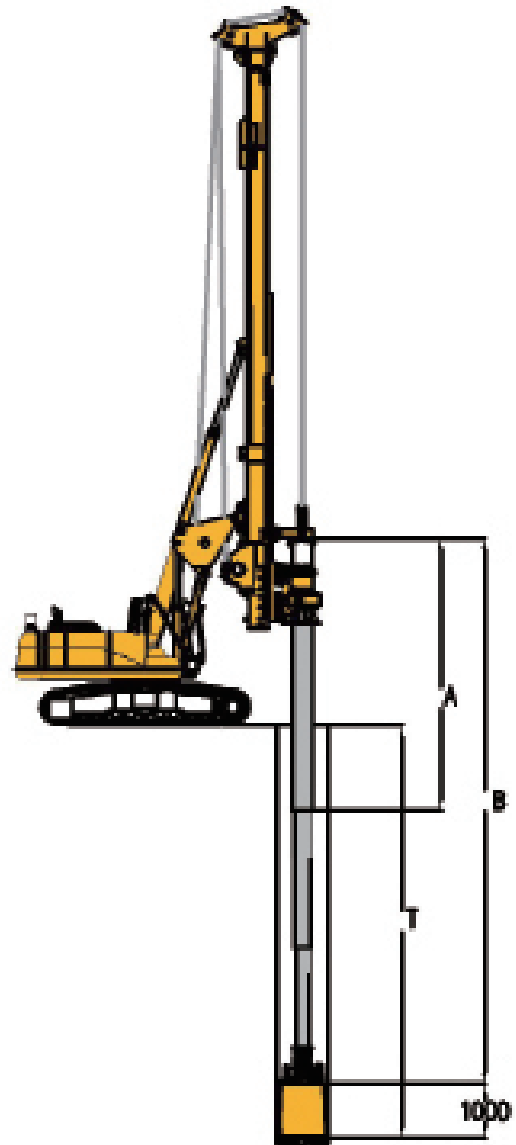
- Main machine system (Include chassis system, power system, mast system, Rotary Drive)
- One set Kelly bar
- 250 working hours maintenance package
- Two set drilling buckets
- Spare parts kit

Technical parameters

Crowd Cylinder	
Overall weight	57 ton
Operation weight (with kelly)	67 ton
Rotary Drive	
Nominal torque	220 kNm
Speed of rotation	6-27 rpm
Spin-off speed	130 rpm
Crowd system	
Crowd force push/pull	180/200 kN
Stroke (kelly system)	5300 mm
Speed down/up	5/6 m/min
Main winch	
Line pull (1st layer)	220 kN
Rope diameter/length	28 mm/90 m
Line speed max	78 m/min
Auxiliary winch	
Line pull (1st layer)	99 kN
Rope diameter/length	20 mm/60m
Line speed max	68m/min
Mast inclination	
Backward/forward/lateral	15/5/5

Standard module

- Rotary drive (two reduction gears), self-adaptive drilling
- Hoist limit switch on main and auxiliary winches
- PLC processor and standard monitor unit
- Display of pump pressures and fault messages
- Mast inclination measurement on X/Y axes
- Display of drilling depth
- Swing caution light and stability monitoring system



Drilling depths

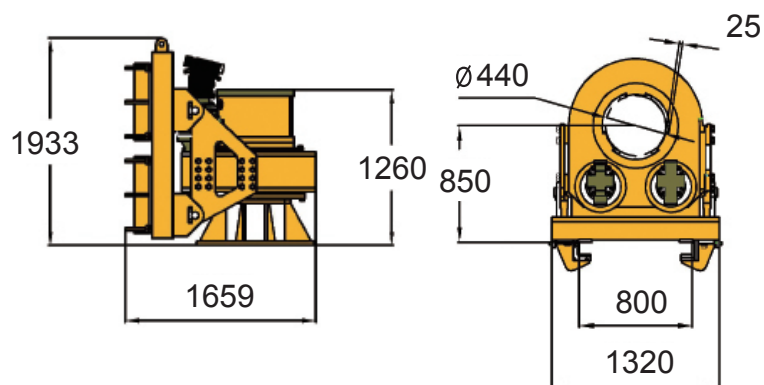
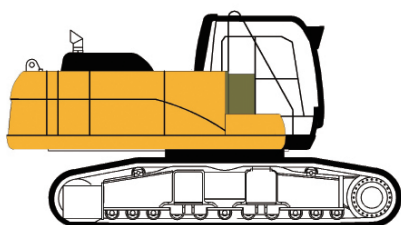
Friction kelly bar	A(m)	B(m)	T(m)
Φ440-5x14	14	67.6	65.2
Φ440-5x13	13	62.6	60.2
Φ440-4x14	14	54.2	51.8
Φ440-4x13	13	50.2	57.8

Interlocking Kelly bar

Φ440-4x14	14	53.6	51.2
Φ440-4x13	13	49.8	47.6
Φ440-3x14	14	40.6	38.2
Φ440-3x13	13	37.4	35

Max. Drilling diameter 2000mm

Base Carrier CAT336D



Engine

Rated output	213kW@1800rpm
Exhaust emission standard	Tier II
Diesel tank	620 L
Ambient air temperature	-20°up to 40°
Sound pressure level in cabin	77 dB
Sound power level	112 dB

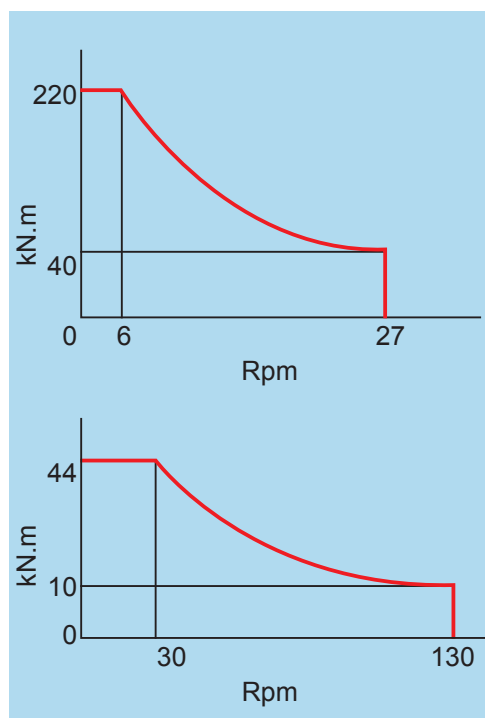
Hydraulic system

Hydraulic power output	162 kW
Hydraulic pressure	350 bar
Flow rates (main pump)	2x280 l/min
Flow rates (auxiliary pump)	90 l/min
Hydraulic oil main tank capacity	610 l
Hydraulic oil auxiliary tank capacity	250 l
Hydraulic oil spin-off tank capacity	60 l

Undercarriage

Crawler type	TC325VH
Track width (retracted/extended)	2200mm/3500mm
Overall width of crawlers (retracted/extended)	3000mm/4300mm
Width of track shoes	800 mm
Overall length of crawlers	5464 mm
Traction force	510 kN
Travel speed	1.5 km/h

Rotary Drive

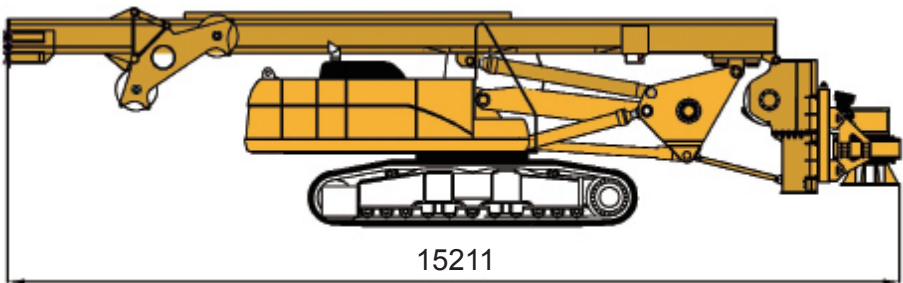


Rotary Drive Standard equipment

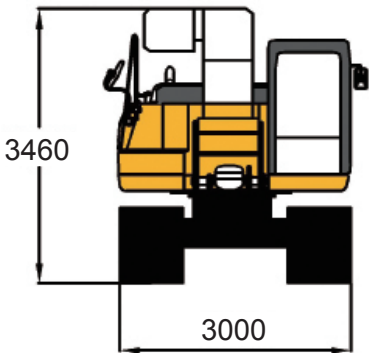
- Integrated Kelly damping system (Four level damping)
- Exchangeable Kelly drive adapter
- Exchangeable Kelly drive keys
- Self-adaptive drilling system
- High speed Spin-off system

Transport data

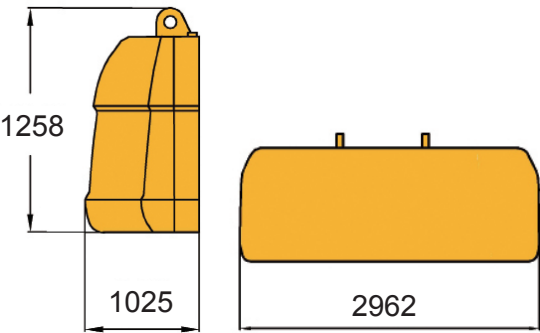
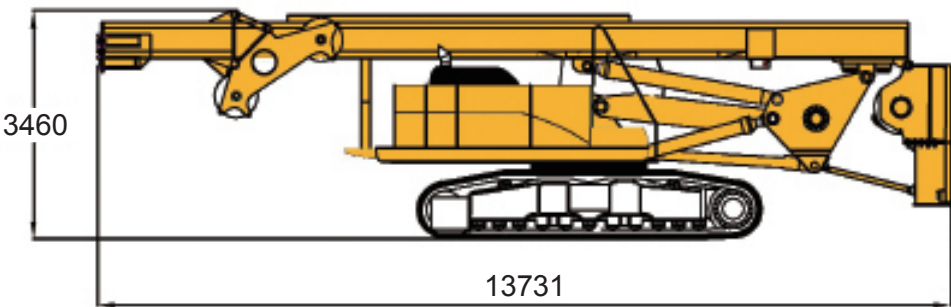
G=57 ton



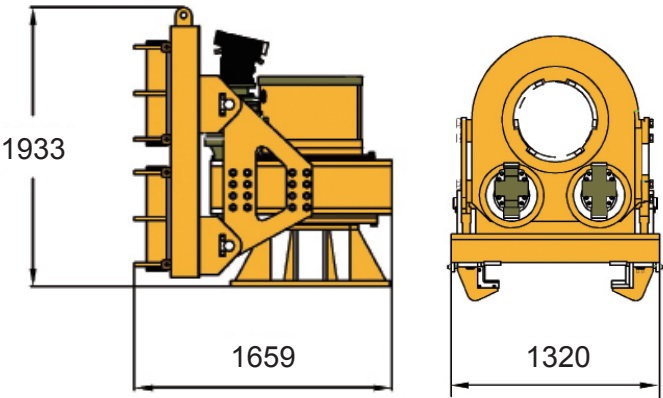
G=37 ton



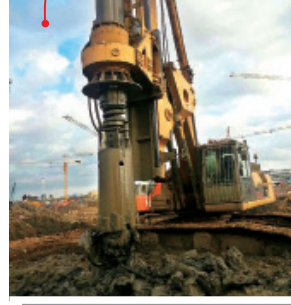
G=41.8 ton



G=10.5 ton



G=4.7 ton



ISO9001:2000
国际质量管理体系认证



Contact information

SKC Mühendislik San. ve Tic. Ltd. Şti.
İMES Makina İhtisas OSB, Küçük Sanayi
Sitesi, C5 BLOK, NO: 2 Dilovası-Gebze
Kocaeli /TURKEY

Tel: +90 262 502 06 54
Gsm: +90-532 470 30 10
Fax: +90 262 502 06 57

E-mail: info@skcmakina.com
Web: www.skcmakina.com

All technical data are purely indicative and subject to change without notice

Other info: