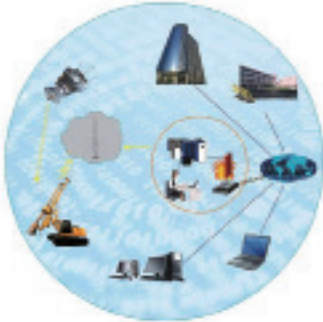


Rotary Drilling Rig
TR150D



Electric system

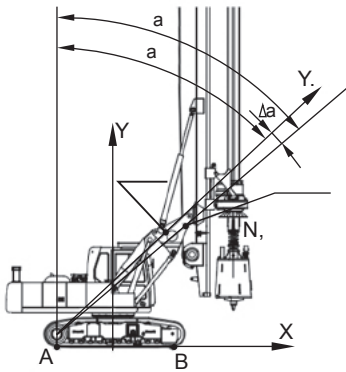
- Wireless transmission system and GPS remote service



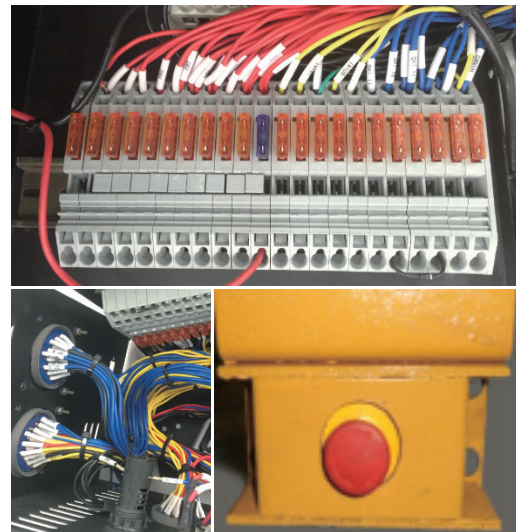
- Construction monitoring system



- The stability of drilling rig monitoring system

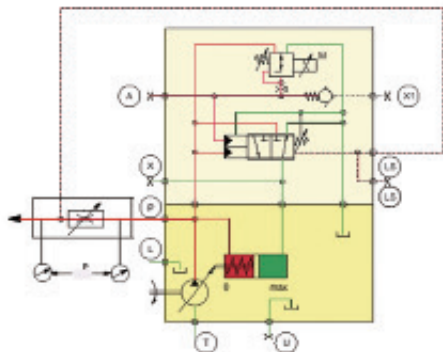


- Emergency switch(optional) and concentration of wiring harness

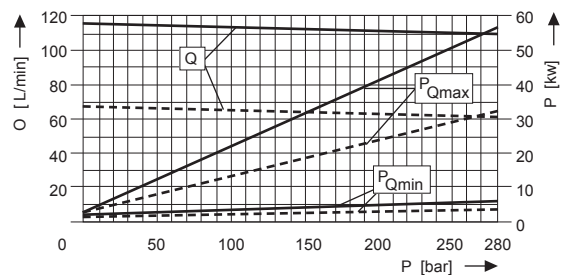


Hydraulic System

- Caterpillar's main hydraulic system
- The main pump negative flow control system
- The auxiliary pump load sensitive control system



- Main hydraulic tank and auxiliary hydraulic oil tank, the hydraulic oil cooling and cleaning easier



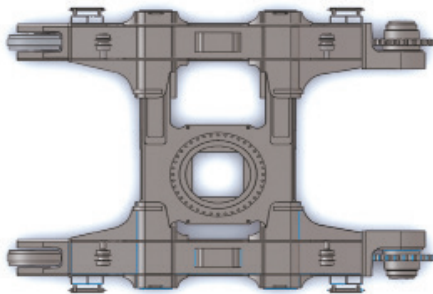
- The main winch hydraulic oil confluence technology improve the winch speed by 50%
- Crowd force stepless adjustment improve construction efficiency
- The rotary drive self-adaptive drilling system and high speed spin-off system improve drilling efficiency

- Reducer, motor, pump, valve configuration of the international first-class brand



Mechanical System

- Kelly drilling and CFA drilling
- Caterpillar Undercarriage



- The broken line reel technology and the winch patent technology make the service life of wire rope improve greatly



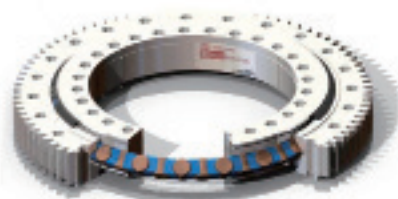
- Caterpillar Undercarriage structure and the mast structure, all materials are special high-strength steel



- Rotary Drive multi-stage damping structure improves the borehole verticality and structural life



- Cross roller bearing improves the drilling accuracy significantly



- Reasonable layout, repair, maintenance are convenient

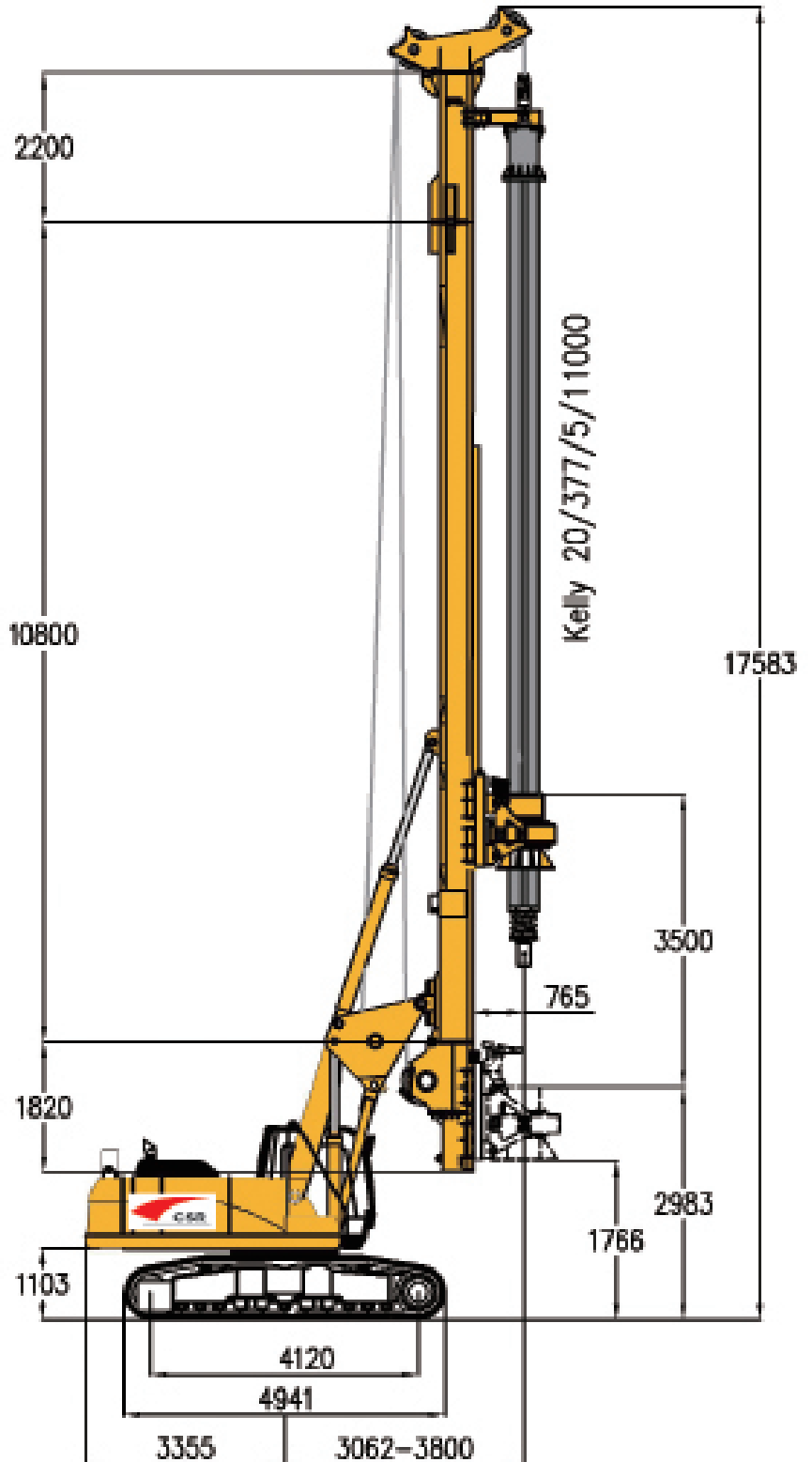


Dimensions

The TR150D rotary drilling rig has an operating weight of approx 51 ton . It is suited for:

- Rotary drilling
- Drilling cased boreholes (installation of casing by rotary drive))

TR150D Rotary Drilling Rig is mainly used in the construction of civil and bridge engineering, which adopts advanced intelligent electronic control system and load sensing type pilot control hydraulic system, the whole machine is safe and reliable.



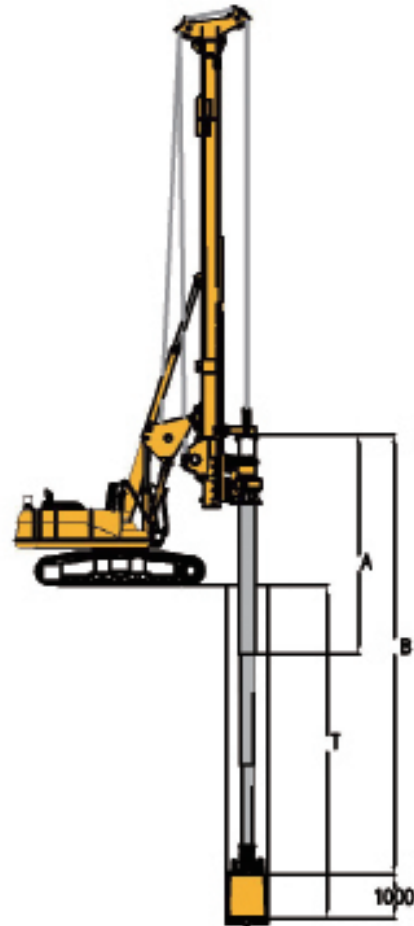
Technical parameters

| Crowd Cylinder | |
|--------------------------------|------------|
| Overall weight | 48 ton |
| Operation weight (with kelly) | 51 ton |
| Rotary Drive | |
| Nominal torque | 150 kNm |
| Speed of rotation | 6-35 rpm |
| Crowd system | |
| Crowd force push/pull | 100/140 kN |
| Stroke (kelly system) | 3500 mm |
| Speed down/up | 5/6 m/min |
| Main winch | |
| Line pull (1st layer) | 138 kN |
| Rope diameter/length | 26 mm/76 m |
| Line speed max | 70 m/min |
| Auxiliary winch | |
| Line pull (1st layer) | 50kN |
| Rope diameter/length | 16 mm/45m |
| Line speed max | 70m/min |
| Mast inclination | |
| Backward/forward/lateral | 15/5/5 |

Standard module

- Rotary drive (two reduction gears), self-adaptive drilling
- Hoist limit switch on main and auxiliary winches
- PLC processor and standard monitor unit
- Display of pump pressures and fault messages
- Mast inclination measurement on X/Y axes
- Display of drilling depth
- Swing caution light and stability monitoring system

Kelly drilling system



Drilling depths

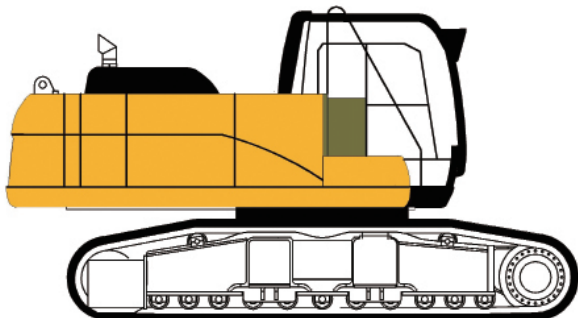
| Friction kelly bar | A(m) | B(m) | T(m) |
|--------------------|------|------|------|
| Φ377-5x11 | 11 | 52.8 | 50.2 |
| Φ377-5x10 | 10 | 48.4 | 45.8 |
| Φ377-4x11 | 11 | 42.4 | 40 |
| Φ377-4x10 | 10 | 38.4 | 36 |

Interlocking Kelly bar

| | | | |
|-----------|----|------|------|
| Φ377-4x11 | 11 | 42.4 | 40 |
| Φ377-4x10 | 10 | 38.4 | 36 |
| Φ377-3x11 | 11 | 32 | 29.6 |
| Φ377-3x10 | 10 | 28 | 25.6 |

Max. Drilling diameter 1500 mm

Base Carrier CAT323D

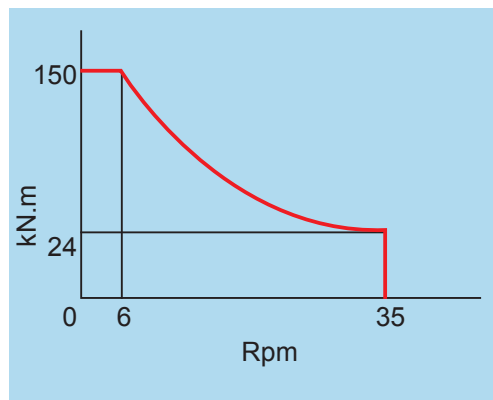
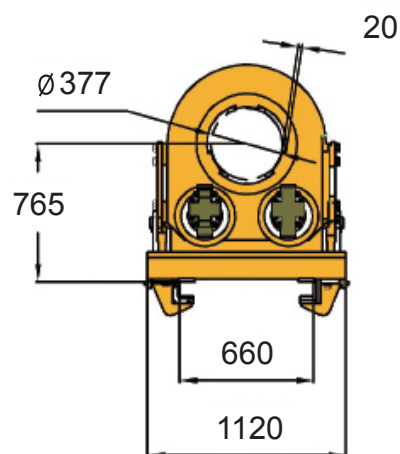
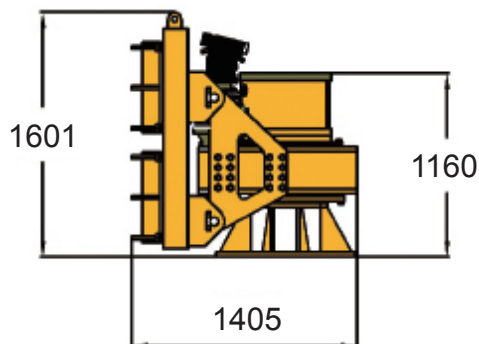


| Engine | |
|-------------------------------|----------------|
| Rated output | 117kW@1800rpm |
| Exhaust emission standard | Tier II |
| Diesel tank | 400L |
| Ambient air temperature | -20° up to 40° |
| Sound pressure level in cabin | 76 dB |
| Sound power level | 110 dB |

| Hydraulic system | |
|---------------------------------------|-------------|
| Hydraulic power output | 88 kW |
| Hydraulic pressure | 350 bar |
| Flow rates (main pump) | 2x205 l/min |
| Flow rates (auxiliary pump) | 90 l/min |
| Hydraulic oil main tank capacity | 400 l |
| Hydraulic oil auxiliary tank capacity | 200 l |

| Undercarriage | |
|--|---------------|
| Crawler type | TC320VH |
| Track width (retracted/extended) | 2200mm/3500mm |
| Overall width of crawlers (retracted/extended) | 3000mm/4300mm |
| Width of track shoes | 800 mm |
| Overall length of crawlers | 4941 mm |
| Traction force | 380 kN |
| Travel speed | 1.6 km/h |

Rotary Drive

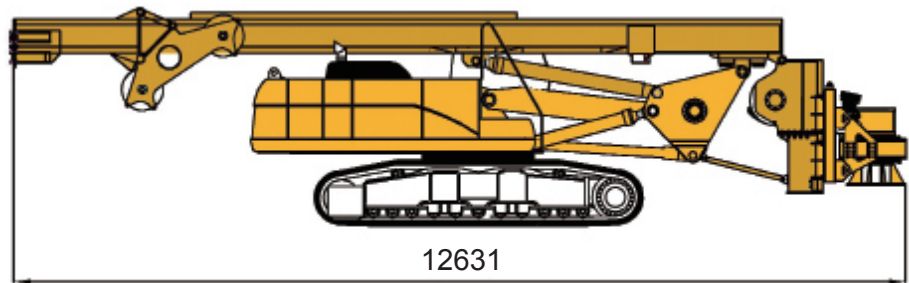


Rotary Drive Standard equipment

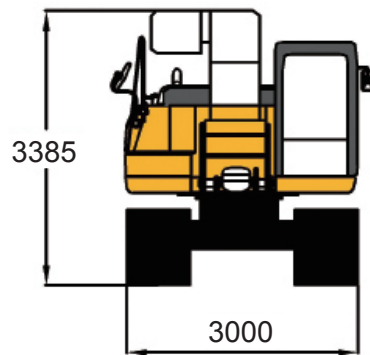
- Integrated Kelly damping system (Four level damping)
- Exchangeable Kelly drive adapter
- Exchangeable Kelly drive keys
- Self-adaptive drilling system

Transport data

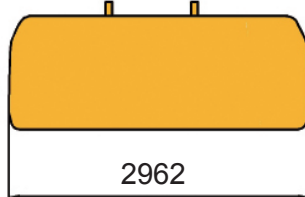
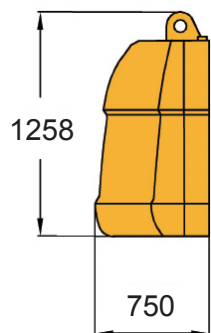
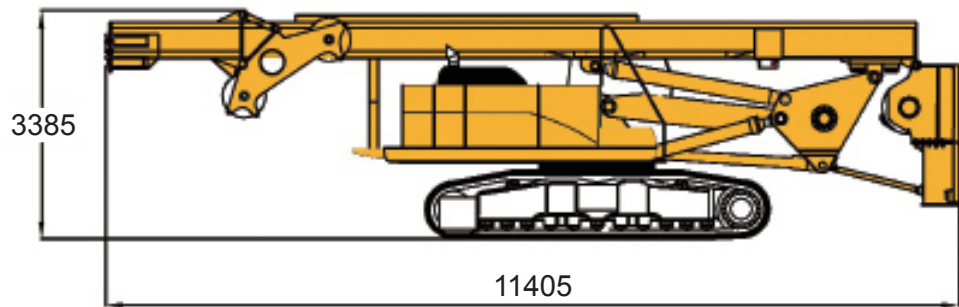
G=45 ton



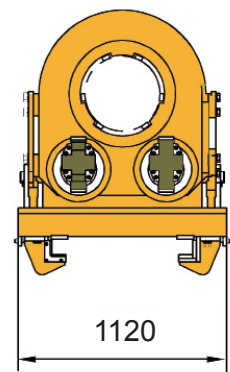
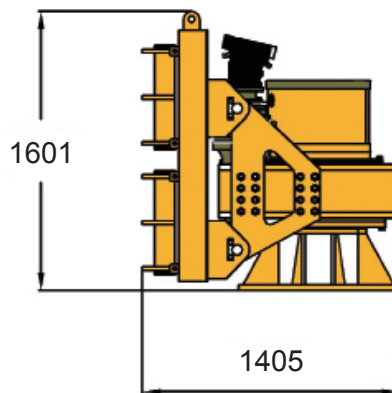
G=24.8 ton



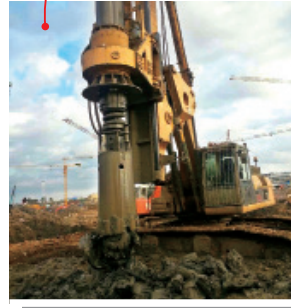
G=33.5 ton



G=7.5 ton



G=4 ton



Contact information

SKC Mühendislik San. ve Tic. Ltd. Şti.

İMES Makina İhtisas OSB, Küçük Sanayi Sitesi, C5 BLOK, NO: 2 Dilovası-Gebze Kocaeli /TURKEY

**Tel: +90 262 502 06 54
Gsm: +90-532 470 30 10
Fax: +90 262 502 06 57**

**E-mail: info@skcmakina.com
Web: www.skcmakina.com**

All technical data are purely indicative and subject to change without notice

Other info: